



GAT MONTHLY MEMBERSHIP PROGRESS REPORT

Results as of: 2/28/2022

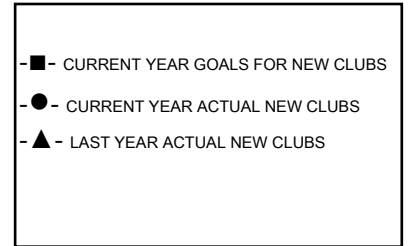
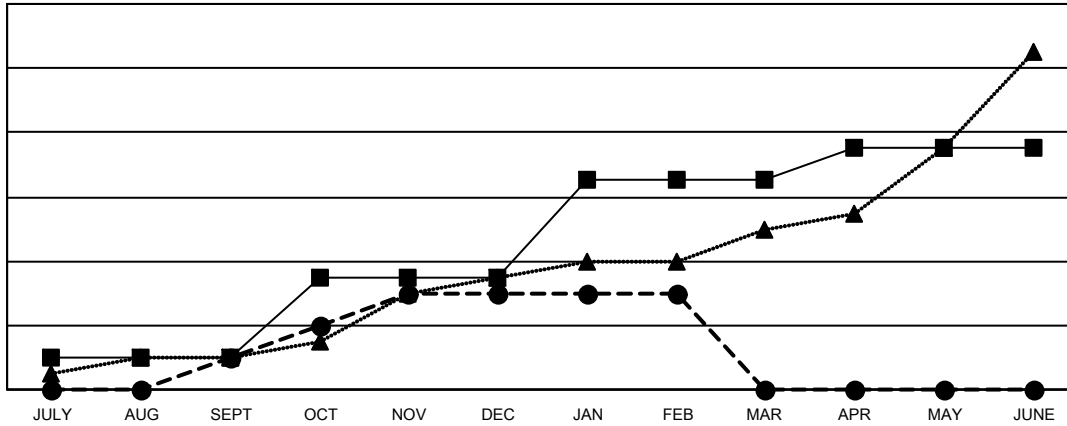
Multiple District A

LOCATION: ONTARIO

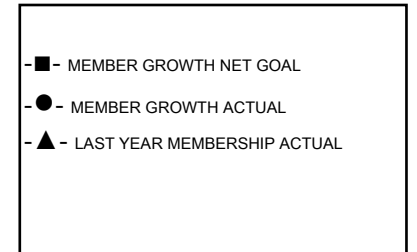
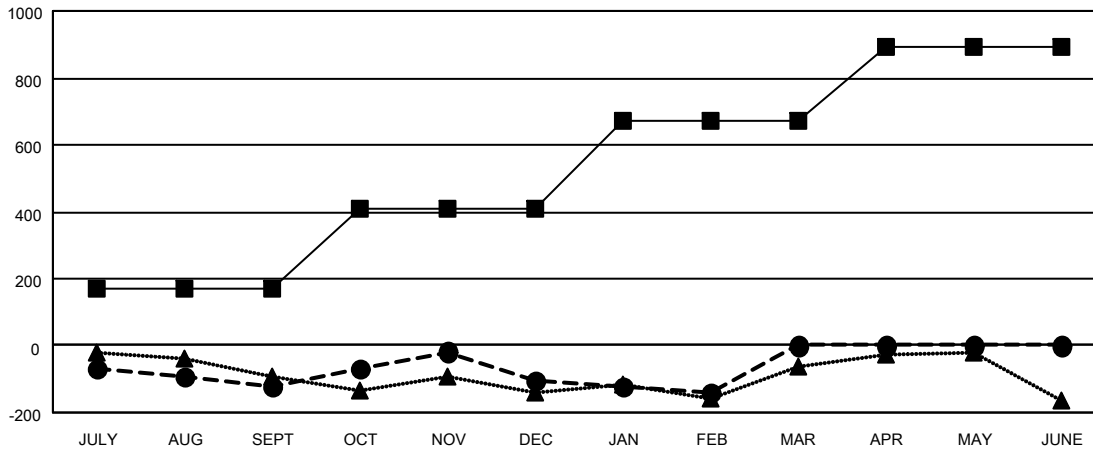
Clubs			
RESULTS FOR 2021-2022			
QUARTER	NEW CLUB GOAL	NEW CLUBS	DROPPED CLUBS
JULY/AUG/SEPT	2	2	3
OCT/NOV/DEC	5	4	2
JAN/FEB/MAR	6	0	3
APR/MAY/JUNE	2	0	0

Members			
RESULTS FOR 2021-2022			
QUARTER	MEMBER GROWTH NET GOAL	MEMBER GROWTH ACTUAL	DROPPED MEMBERS ACTUAL (including transfers)
JULY/AUG/SEPT	170	256	333
OCT/NOV/DEC	240	484	421
JAN/FEB/MAR	260	171	178
APR/MAY/JUNE	225	0	0

GOALS AND ACTUAL NEW CLUBS CUMULATIVE



GOALS AND ACTUAL MEMBERS CUMULATIVE



DROPPED CLUBS: 8	216 CLUBS OF 538 ADDED 1 OR MORE NEW MEMBERS	GENDER DISTRIBUTION
DROPPED MEMBERS	CLICK HERE FOR CUMULATIVE MEMBERSHIP DATA	MALE 8,087 (66.39%)
DECEASED 136		FEMALE 4,093 (33.60%)
CLUB CANCELLED 38		NON BINARY 0 (0.00%)
OTHER 758		PREFER NOT TO ANSWER 1 (0.01%)
TOTAL 932		TOTAL FAMILY UNIT MEMBERS 2,239
		FAMILY MEMBERS PAYING HALF DUES 1,154